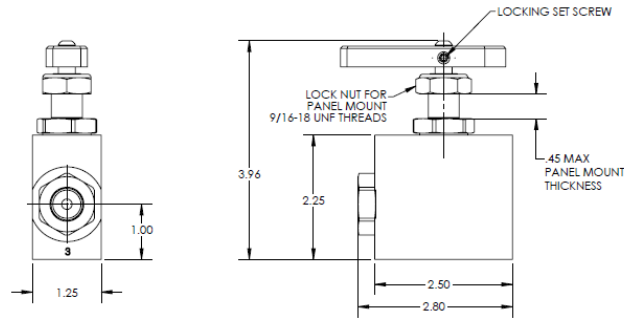


**Patented**  
**Pat Num D8886951**  
**Ball Valve On/Off**  
**06-250-231**



**Description:**

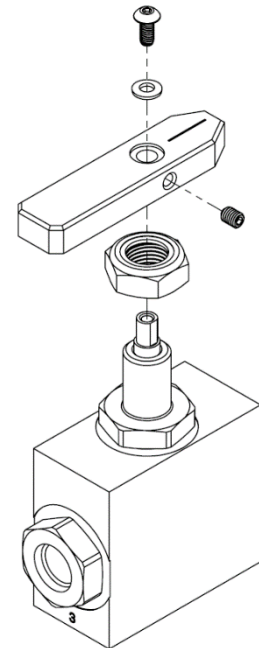
Pressure-balanced 3-way low leakage ¼ turn ball valve.  
 Pressure -balanced ball seats enables the valve to actuate under pressure

**Features:**

- Ideal for controlling loaded systems such as a cylinder locking valve
- Plated alloy steel and anodized aluminum construction
- Handle included (Unassembled for bulkhead installation)

**Specifications:**

- Maximum Operating Pressure: 3000 psi
- Nominal Flow Capacity: 6 GPM
- Operating Temperatures Range: -40 °F to 210 °F
- Fluids: Mineral based hydraulic fluids
- Seals: Specialized polymer seats and seals with nitrile orings and PTFE backups



**Ordering Information:**

Assembly Part Number	Ordering Options
<b>06-250-231</b>	Product comes with handle disassembled for bulkhead installation

**Bridon Industries, Inc**  
 1157 Valley Park Drive Suite 125 Shakopee, MN 55379  
 Tel: 952 470-6179 Fax: 952 767-6703  
 Visit us at [www.bridonindustries.com](http://www.bridonindustries.com)