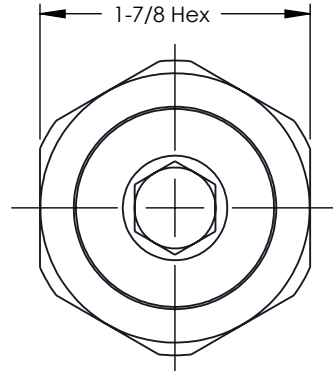
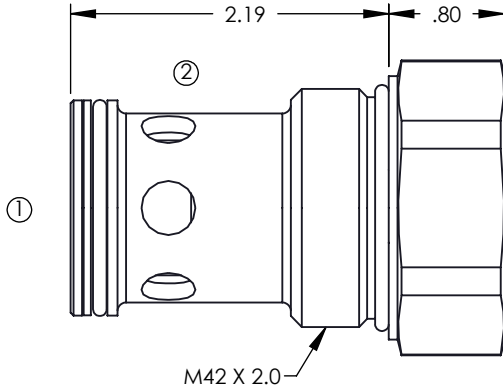


## Check Valve 06-250-199 M-42 Cartridge



### Description:

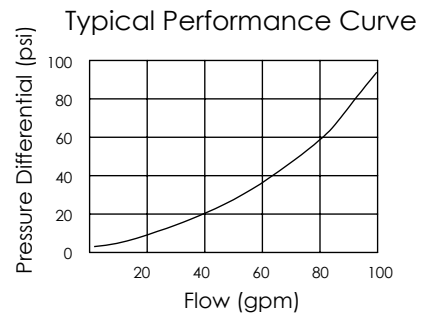
Hydraulic check valve  
Screw-in cartridge type

### Features:

Steel body and poppet  
Guided poppet design  
Spring options for various crack pressures

### Specifications:

Maximum Operating Pressure: 3500 psi  
Nominal Flow Capacity: 80 gpm  
Internal Leakage Rate: 5 drops/minute  
Temperature Range: -40°F to 250°F  
Fluids: Mineral-based hydraulic fluids  
Cavity: ISO 7789 42-01-0-98 (ISO M42-2.0)  
Installation Torque: 110-120 ft-lbs



### Ordering Information

Assembly Part No.

**06-250-199-XX**

Ordering Options

*Crack Pressure*

05 = 5 psi  
30 = 30 psi  
45 = 45 psi  
60 = 60 psi